

artWORKS basics

Welcome to Exploring artWORKS. The four tutorial chapters in this manual will introduce you to the tools, features, and commands you need know to start using artWORKS for your graphics projects.

Before you begin...

You should be familiar with the Macintosh and standard actions such as clicking and dragging. You should know how to use window elements in Macintosh programs, including close, zoom, and size boxes, and scroll bars. For more information, see the *Macintosh User's Guide*.

To work through the tutorial exercises, you must have the correct set of external tools loaded when you start artWORKS. Follow these steps to start artWORKS and load the tools used in the tutorial exercises:

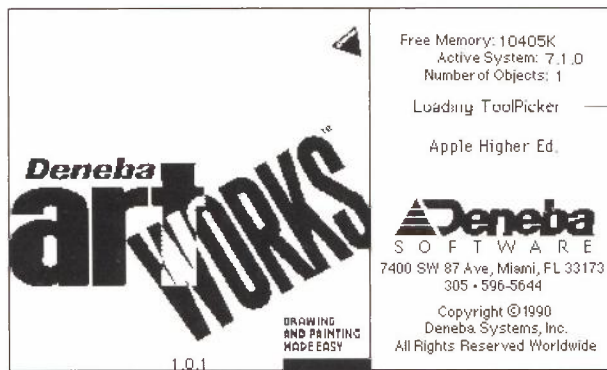


Deneba artWORKS™

1. Open the artWORKS folder and locate the artWORKS icon.
2. Hold down the Space Bar and double-click the artWORKS icon.

Continue holding down the Space bar until the message "Loading ToolPicker appears in the artWORKS startup screen

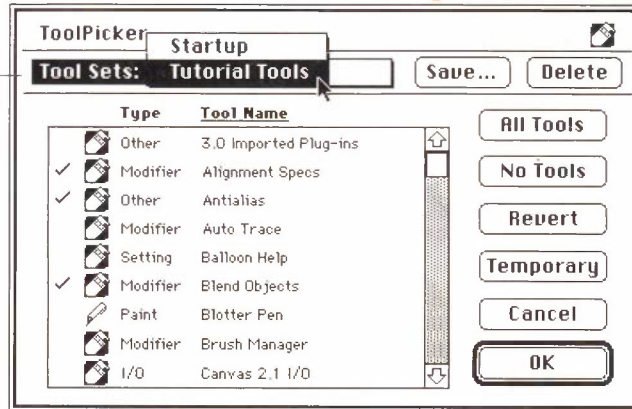
artWORKS startup screen



ToolPicker
message

After a few moments, the startup screen closes and the ToolPicker dialog box appears:

Choose "Tutorial Tools" from the pop-



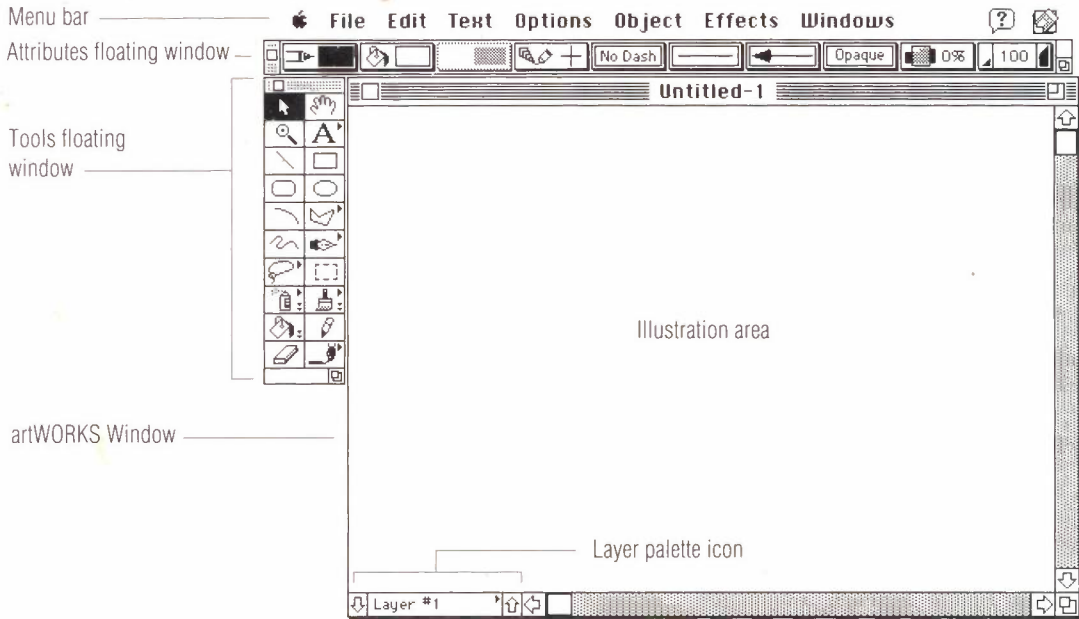
3. Choose *Tutorial Tools* from the Tool Sets pop-up menu and click OK.

The dialog box closes and artWORKS loads the tools. Once you choose a tool set, artWORKS loads the same tool set each time it starts, until you use ToolPicker to choose other tools.

artWORKS screen elements

After artWORKS starts, its standard screen elements appear: the artWORKS menu bar at the top of the screen; the Attributes floating win-

dow under the menu bar; the Tools floating windows on the left of the screen; and the artWORKS Window.



The artWORKS **menu bar** contains the program's File, Edit, Text, Options, Object, Effects, and Windows menus.

The **Attributes floating window** contains palette icons for setting object properties and magnification levels.

The **Tools floating window** contains artWORKS tools used in creating and viewing documents.

The **artWORKS Window** contains the illustration area. This area represents a page on which you place graphics and text to create artWORKS documents. The artWORKS Window also includes the Layer palette icon for working with illustration layers. The artWORKS Window has standard Macintosh window elements: a title bar, close box, size box, zoom box, and scroll bars. You can open as many artWORKS Windows (documents) as your computer's memory allows.